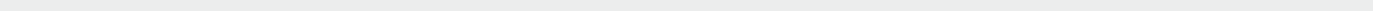




Creativity
Craftsmanship
Quality



Xirea
APPARELS



About Us



Xirea Apparel was created to help and serve independent apparel brands, large organizations such as the military, Oil and Gas companies and e-commerce retailers with their sourcing and garment production requirements.

We handle the whole supply chain process from designing, creating tech packs, sourcing for fabrics and trims, create samples, bulk apparel production, packaging, quality control assessments to arranging delivery of the products.

Women empowerment is one of the biggest tools for effective development in any country. We therefore strive to empower socially and economically disadvantaged women. XIREA Apparel™, located in Trans Amadi Industrial Estate in PortHarcourt, has since 2017 trained over 200 women in apparel design and production. Most of our associates have faced difficult and significant social and economic hardships such as abuse, being differently abled, widowed, divorced, single or orphaned. These women are employed and provided with free training on the different steps of apparel production as well as business and other related skills in preparation for employment and entrepreneurship, and we ensure they are fairly compensated.

Above all, at Xirea, we look at each project as a partnership where quality and the fun of seeing creative ideas come to life are the most important.

The background of the slide is a photograph of a large, modern garment factory. The factory floor is filled with rows of sewing machines and workstations. In the background, several large rolls of fabric are visible. The lighting is bright, coming from overhead industrial fixtures. A semi-transparent blue diagonal overlay covers the upper left portion of the image, and a dark grey rectangular box is positioned in the lower right, containing the 'Our Vision' section.

Our Mission

Utilize the vast human resources available in Nigeria to develop the garment industry and help reduce unemployment. Additionally, through our design driven culture, drive and the expertise of each individual employee, we are uniquely positioned to provide best-in-class services to a global customer base.

Our Vision

Our Vision is to become the premier garment factory in Africa, building new factories across the country while training and employing more than 50,000 Nigerians by 2030



Our Solutions

Locally manufactured top quality garments designed to global standards. We offer a complete supply chain solution from sourcing of inputs to delivery of finished products for the following;

- PPE – Disposable coveralls, Lab coats, Rain wear, Hi visibility Vests
- Corporate Apparel - Branded shirts, face caps
- Armed forces Uniforms and garments
- School Uniforms
- All fashion Apparel
- Miscellaneous garments and accessories as needed

Why Xirea?



Ultramodern factory for the local production of all types of garments

- Factory Located in Trans Amadi Industrial Estate in Port Harcourt.
- Committed to Local Content Development - Trained and employed more than 200 people all from within a 2 mile radius of the factory.
- 4 Production lines with more than 250 machines.
- Daily output between 500 to 4000 garments at full production capacity.
- In House garment development to Global Standards.
- CE Certified raw materials.
- Certified processes

Vast Experience in sourcing

- Alliance with several global fabric, trim and accessories manufacturers.
- Frame agreements for garment supply to multinationals.

Cost effective without compromising quality

- Stock holding capacity.
- Savings from local production passed unto customer.
- Strict Quality Control (ISO Certification ongoing).

Technology at the centre of our operations

- State of the art inventory management system.
- Automated design and pattern making.
- Real time monitoring of order.
- Solutions to help clients develop knowledge base around their order through data acquisition.

Team Built to execute

- More than 80 yrs combined experience in garment manufacturing and sourcing on 3 continents.
- MIT trained logistics and supply chain experts.
- Local R&D Team.

Factory Profile



Name of Company: Xirea Apparels Ltd.

Year Established: 2017

Number of Machines: 219

Number of workers: 450 (Full capacity)

Number of Lines: 4 Lines

Area: 15,000 Sq.Ft.

Products:

All types of Knit & Woven items,
Trousers, Shirt, Coverall, Jacket, Work-dress,
Uniform, Rain wear, Apron, Men, Ladies,
Boys, Children Padded and
Non-Padded Jacket etc.

Production Capacity (Monthly):

25000-30000 pcs, (For High SMV 45-60), like coverall, jacket..etc.

40000-50000 pcs, (For Medium SMV 25-40) Trousers, Jacket, Shirts etc.

60000-75000 pcs, (For low SMV 15-24), Normal Pant, shirts..etc..

130000-140000 pcs, (Normal SMV (5-12), T-Shirts, Polo Shirts, Lagging....etc

Factory Profile



Address: Plot: 69b Trans Amadi Industrial Lay Out, Port Harcourt, Nigeria.
Head office: 22A Yesufu Abiodun way, Oniru Estate, Victoria Island, Lagos Nigeria
Tel Phone: +234 14540325, +2348087109374
Email: enquiries@xireaapparel.com
Website: www.xireaapparel.com

Contact:

Mr. Obinna F. Eneh
Founder / Chief Executive

Email: obinna@xireaapparel.com, obinna@aerixnigeria.com
Cell Phone: +2348087109374

Mohammad Shafiul Alam
General Manager

Email: shafiul.alam@xireaapparel.com, shafiul.alam@aerixnigeria.com
Cell phone: +2347059170938

Factory Profile

List of Machinery

SL	Descriptions	Brand	Quantity	Type
1	SINGLE NEEDLE PLAIN MACHINE	JUKI	43	AUTO TRIMMER
2	SINGLE NEEDLE PLAIN MACHINE	JUKI	35	MANUAL
3	5THREAD OVER LOCK MACHINE	JUKI	25	
4	4 THREAD OVER LOCK MACHINE	JUKI	5	
5	DOUBLE NEEDLE MACHINE	JUKI	6	MANUAL
6	DOUBLE NEEDLE MACHINE	JUKI	15	AUTOMATIC
7	SIDE EDGE CUTTER MACHINE	JUKI	7	
8	3 NEEDLE FEED OF ARM	JUKI	10	
9	3 NEEDLE FLAT BED MACHINE	JUKI	4	
10	3NEEDLE CYLINDER BED MACHINE		2	
11	3 NEEDLE CHAIN STITCH MACHINE	JACK	6	
12	SNAP BUTTON ATTACH MACHINE	JUKI	2	
13	KANSAI MACHINE DFD	KANSAI	10	
14	KANSI MACHINE DLR	KANSAI	5	
15	SNAP BUTTON ATTACH MACHINE	JUKI	6	AUTOMATIC
16	BAR TACK MACHINE	JUKI	10	
17	EYLET ATTACH MACHINE	JUKI	2	
18	BUTTONHOLE	JUKI	1	AUTOMATIC
19	BUTTON ATTACH	JUKI	1	AUTOMATIC
20	SEAM SEALING MACHINE (RAIN WEAR)	H&H	4	
21	FUSING ATTACH MACHINE	HASHIMA	1	
22	CUTTING MACHINE		5	
23	INDUSTRIAL STEAM IRON CONSOLE		5	
24	OTHER TOP IRON		8	
25	EMBROIDERY MACHINE		1	
TOTAL			219	

Our Brands

WORKMANN'S

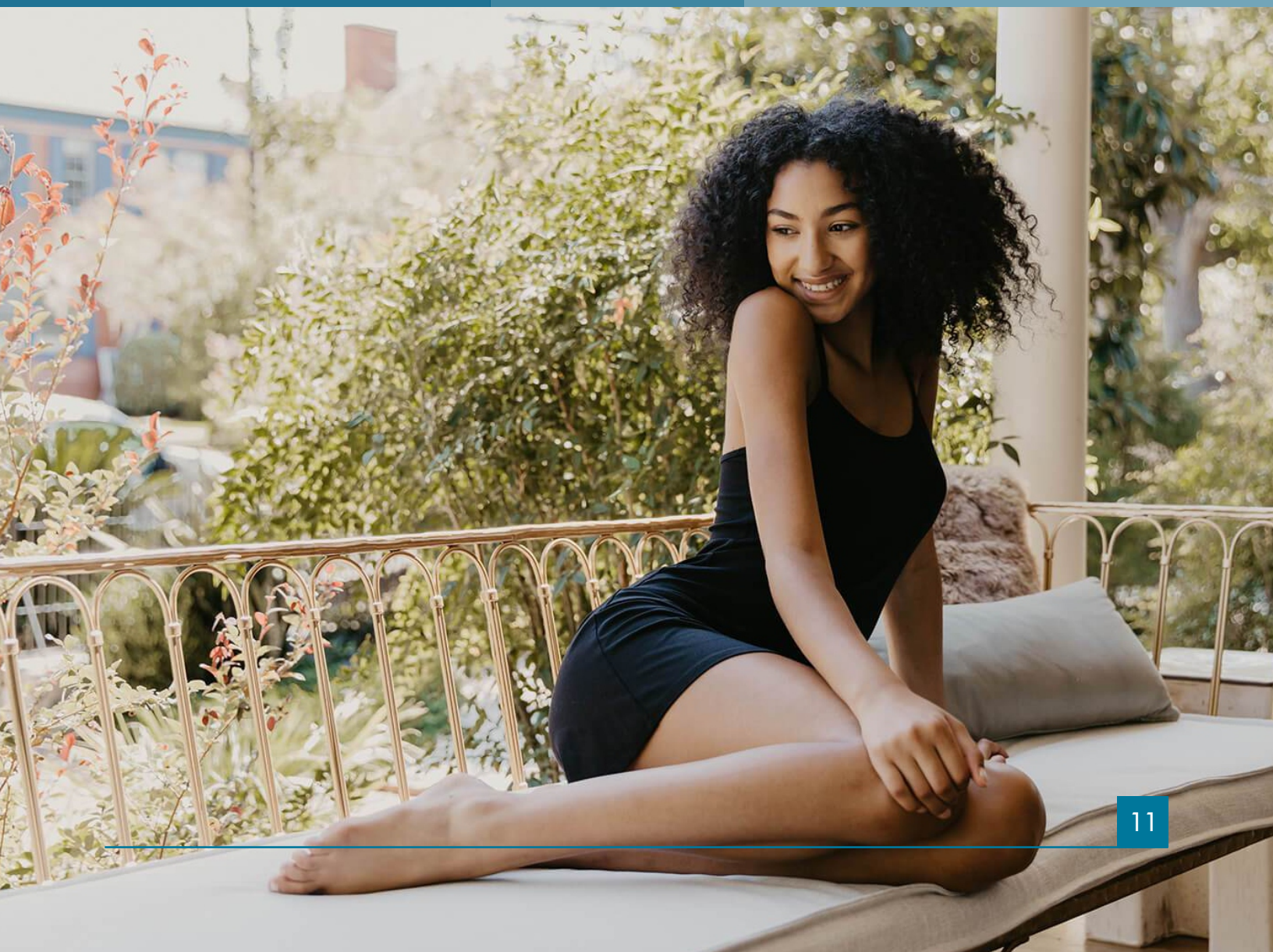


The background of the page is a photograph of an industrial setting. On the left, there is a large, light-colored concrete wall with some pipes and a red fire alarm pull station. On the right, a person is standing, wearing dark-colored work trousers and black safety boots with red laces. A large, semi-transparent dark grey rectangle is overlaid on the center of the image, containing the text. A solid teal vertical bar is on the right side of the image.

WORKMANN'S

Comfortable and Affordable workwear for all people to inspire optimum performance daily.
Our range include Coveralls, Chef's uniforms, NYSC type uniforms, Security personnel uniforms, Corporate garments and more.

oodi





Oodi was founded to provide top quality but affordable inner and outerwear for men, women and children. Our products include;

- Men's underwear and undershirts, Polos, T-shirts and shorts
- Women's underwear such as bras, panties and bodywear
- Kid's underwear and undershirts
- Socks and Hosiery





JENIUS





JENIUS

The Jenius brand was created to cater to Children's apparel needs. With exciting colours, comfortable yet durable fabrics and trims at value pricing, Jenius is poised to become the darling for parents and children.

Our products include;

School Uniforms for boys and girls

Casual and Sports wear

Accessories - Socks, Belts, School bags, Water bottles and more.





With strength and durability etched in its DNA, Buphalo provides cutting edge head-to-toe Personal Protective Equipment (PPE) made from the finest materials in accordance with the strictest safety standards and exclusively crafted to ensure all-round protection. Innovation is at the core of our operations as we engage our customers to improve our existing products while developing new ones to suit their challenging and varied environments. Our range of products include Safety work wear, Hearing protection, Hand Protection, Eye and Face Protection, Respiratory and Fall protection solutions. No matter what your requirements are, We design your safety to protect you in Style

22A Yesufu Abiodun Way
Oniru Estate, Victoria Island
Lagos, Nigeria

Plot 69B Trans Amadi
Industrial Layout
Port Harcourt

tel: +234 808 710 9374, +234 906 088 6578
email: enquiries@xireaapparel.com
website: www.xireaapparel.com